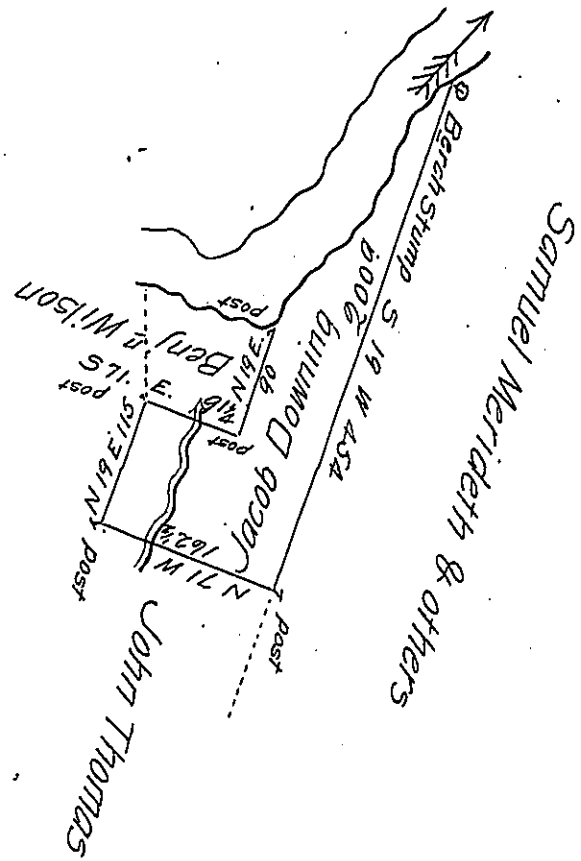


Courses up Delaware River  
from Birch Stump

- 5 63 W 5 1/2
- 5 41 W 37
- 5 26 W 77
- 5 35 W 37
- 5 39 W 24
- 5 52 W 43
- 5 40 W 16
- 5 12 W 22 1/4
- 261 3/4



In pursuance of a Warrant dated March 3<sup>d</sup> 1794 Surveyed July 17<sup>th</sup>  
 1794 to Jacob Downing the above tract of Land Situate adjoining  
 Delaware River below the mouth of Equinunk Creek in Northampton  
 County Containing two hundred Acres and the allowance of Six Per  
 Cent.

Anty. Grothers D.S.

To Daniel Brodhead Esq.  
 Surveyor General

IN TESTIMONY that the above is a copy of the original remaining on file in  
 the Department of Internal Affairs of Pennsylvania, made  
 conformably to an Act of Assembly approved the 16th day of  
 February, 1833, I have hereunto set my Hand and caused  
 the Seal of said Department to be affixed at Harrisburg,  
 this twenty fifth day of July 1904.

*Francis B. Brown*  
 Secretary of Internal Affairs.